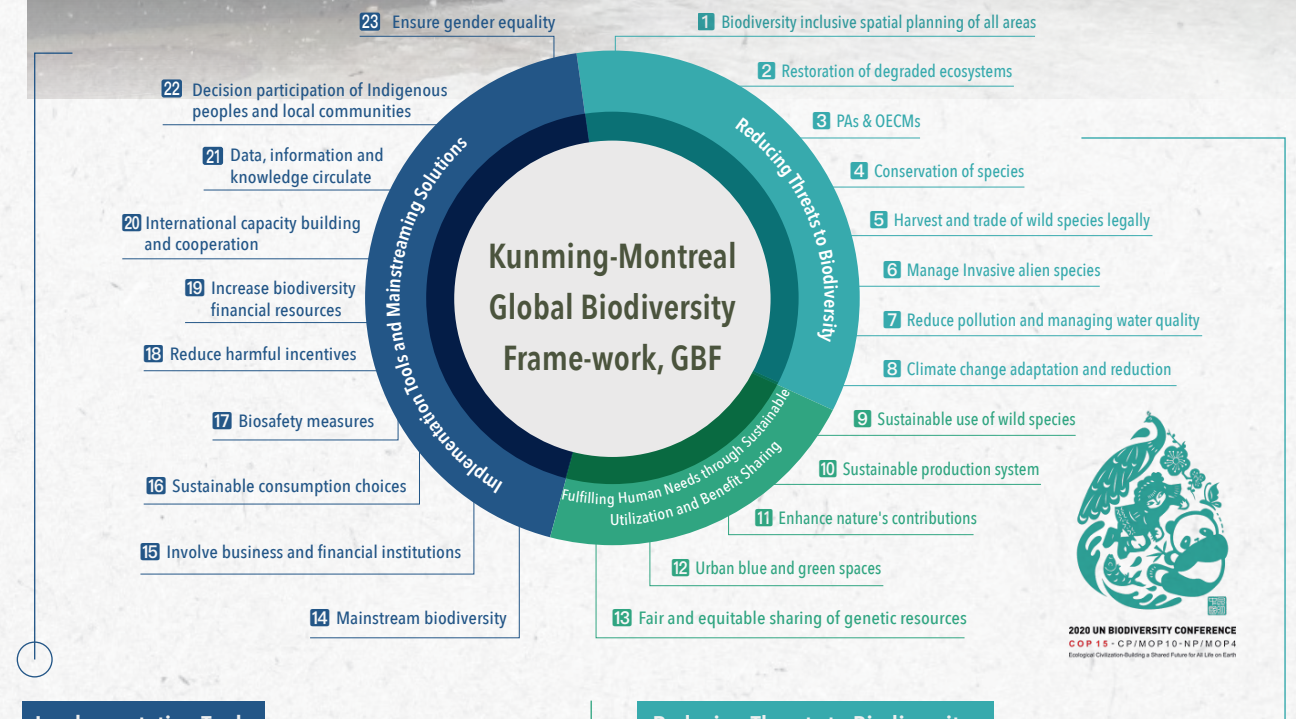


1

NATURE TOPIC STRATEGIES

Living Planet Report 2022 found that the wildlife populations on the planet have plunged by nearly 70% in just under 50 years since 1970. The Kunming-Montreal Global Biodiversity Framework (GBF) was adopted by the UN Biodiversity Conference (COP15) in 2022. Bearing a significance the same as the Paris Agreement on climate issues, the GBF clearly defines its target: turn the tide of biodiversity loss by 2030, encouraging businesses to regularly monitor and disclose their dependencies and impacts on nature.

Chairman An-ping Chang is convinced that "the human activities on Earth have led to drastic changes in the environment, resulting in destruction of habitats and extinction of species. Only through mutual consideration, symbiosis, and altruism with nature can we find the best way to a true survival and development." In line with the three dimensions of the GBF, TCC examined the core businesses and the nature-related policies and actions of the enterprise with 23 action targets. Meanwhile, aiming primarily for Biodiversity No Net Loss, TCC advances toward the vision of Nature Positive to coexist with nature in harmony.



Implementation Tools and Mainstreaming Solutions

- 14 Addition of the biodiversity functional group to the sustainability management framework
- 15 Regular monitoring of operating sites and release of Nature & Biodiversity Report - TNFD Pilot Program
- 16 Promotion of TCC's EARTH HELPER initiative, the carbon reduction sustainability action initiative
- 19 Establishment of the Water Environment Watch at the Hoping Port to recruit from the local community to jointly safeguard the marine environment
- 21 Annual Sustainability Report, Eco-tour, and Environmental Education Courses
- 22 Tribal consultation for mines and establishment of TCC DAKA Eco-Factory
- 23 Females included in the teams of BMPs for the life on land and below water

Reducing Threats to Biodiversity

- 3 Assessment of the availability of OECM accreditation for the Hoping Port and Ho-Ping Ark Ecological Program Base
- 4 Support to the establishment of Dr. Cecilia Koo Botanic Conservation Center in 2007 to conserve the provenance and genes of tropical and subtropical plant species
- 6 Removal of the alien species White Popinac at the Shoushan Mine in Kaohsiung; assistance of the Hoping Plant to Hualien County Government to recycle the alien species White Popinac as bioenergy
- 7 Introduction of ISO 14001 and ISO 46001 to 100% exercise all-round environmental management
- 8 The Kaohsiung Plant provided to the city government for the construction of detention basin, free of charge, to mitigate and adapt the impact of flood

Fulfilling Human Needs through Sustainable Utilization and Benefit Sharing

- 11 BMPs for the life on land and below water
- 13 Donation of plants by KBCC for academic and medicinal research

1.1 | Biodiversity Policy

TCC is committed to not exploring or exploiting World Heritage Sites or IUCN Protected Areas I-IV, averting and minimizing the impacts on nature from development following the principle of avoidance, reduction, mitigation, compensation. For any development in the high biodiversity importance areas of global or national out of business needs, Biodiversity Management Plans (BMPs) shall be conducted in line with the local laws and regulations and GCCA Sustainability Guidelines for Quarry Rehabilitation and Biodiversity Management.

No Deforestation Commitment

In line with the zero-deforestation spirit of the COP26 resolution under the United Nations Framework Convention on Climate Change (UNFCCC) and in response to the SDG 13: Climate Action and SDG 15: Life on Land, TCC has made its No Deforestation Commitment, implementing management approaches for forest areas within mines as follows:

SCOPE | TCC Mines

- 100% mining sites not in the nationally protected areas
- 100% zero deforestation beyond the mining areas and commitment to the recovery and restoration in mining areas

Nature-based Solution (NbS)

The International Union for Conservation of Nature (IUCN) has defined a nature-based solution (NbS) as "actions to protect, sustainably manage, and restore natural and modified ecosystems that address societal challenges effectively and adaptively, simultaneously benefiting people and nature." With NbS at the core, TCC effectively manages the environmental impacts of operating sites, restores local ecosystems, and protects unique and endangered species in order to mitigate climate change and create Nature Positive impacts.

Promotion of Supply Chain's Response on Biodiversity

TCC extends to partners on the value chain, emphasizes the environmental impact management of suppliers on biodiversity, discusses and shares biodiversity-related information with its partners. Also, with reference to the United Nations Global Compact (UNGC), TCC strengthens its influence on suppliers via six steps, including target setting and risk and impact assessments. Moreover, TCC added topics of biodiversity in the 2022 Supplier Sustainability Evaluation Forms as well to collectively protect the biodiversity on the value chain.



1.2 | Nature Governance Framework and Targets

Board of Directors	Guides and supervises the management performance of TCC on issues related to nature and biodiversity risks.
Corporate Sustainable Development Committee	Responsible for the approval and supervision over works related to the development of nature and biodiversity.
Office of Responsibility and Sustainability	Responsible for integration of group resources and promotion research on nature and biodiversity issues as well as identification of the risks, impacts, and related opportunities of TCC on nature and biodiversity.
Biodiversity Group	<ul style="list-style-type: none"> Responsible for the TNFD and SBTN research, along with ongoing assessment of the responses for biodiversity and natural hazard mitigation. Executes works biodiversity projects.

Short-, Medium-, and Long-term Targets for Nature Conservation

TCC sees environmental conservation and ecosystem restoration as the vital obligation and commitment of the enterprise. Through communication, integration, and strategy planning, TCC formulated specific conservation targets for plant provenance conservation and protection of indigenous species at mines.

TCC specifically set its biodiversity targets for 2025, 2030, and 2050. Actions and works are implemented via the Biodiversity Group and tracked regularly by the Office of Responsibility and Sustainability, which are reported to the Corporate Sustainable Development Committee and Board of Directors by the Chief Sustainability Officer on a regular basis, so as to ensure an effective implementation of the targets.

More detailed biodiversity metrics and targets shall be formulated in alignment with international frameworks like TNFD and SBTN.

Performance in 2022	Target by 2025	Target by 2030	Target by 2050
Plants conservation endangered species included Unit taxa			
34,154	≥35,000	≥40,000	≥45,000
Ratio of indigenous plants species at mines Unit %			
88.88%	None	90%	95%

1.3 | Professional Partnerships and Initiatives



Professor from the Ho Chin Tui Lecture Series, National Tsing Hua University and CEO of KBCC.
Professor Chia-Wei Li
 TOPICS FOR PARTNERSHIP
 Ho-Ping Ark Ecological Program
 COMMUNICATION FREQUENCY
 Quarterly



Professor Chyi-Rong Chiou, the Director of NTU Biodiversity Research Center
 TOPICS FOR PARTNERSHIP
 TNFD Pilot Program consultation
 TNFD industrial-academic collaboration
 project with graduates
 COMMUNICATION FREQUENCY
 Timely



Soil expert, Dr. Chiao-Ping Wang and the NTU IEEB team led by Professor Chih-Han Chang
 TOPICS FOR PARTNERSHIP
 Innovative ecosystem modeling, mine sites soil and reforestation projects, soil research expert grants
 COMMUNICATION FREQUENCY
 Quarterly



Professor Ji-Wei Huang, Sustainable Landscape Laboratory, National Ilan University
 TOPICS FOR PARTNERSHIP
 Taibaishan Mine Ecosystem Restoration Program
 COMMUNICATION FREQUENCY
 Weekly



Eco-Angel Environment Conservation Association Secretary-General Chen Ying-ling
 TOPICS FOR PARTNERSHIP
 Bio Cube Coral Creation Project
 COMMUNICATION FREQUENCY
 Quarterly

PROFESSIONAL PARTNERSHIP	TOPICS FOR PARTNERSHIP	COMMUNICATION FREQUENCY
Shoushan National Nature Park Administration	<ul style="list-style-type: none"> Restoration of the indigenous plants at the mine of Kaohsiung Plant Reconstruction of the Kaohsiung Plant into a tourist attraction rich in history, culture, and eco-tour and organization of guided-tour activities 	Yearly
Hoping Village Office, Chairs of Gukut and Knlibu Tribes, and Tribal Mothers' Classroom	Consultation on the ecological conditions in the traditional areas	Every half a year
Taipei University of Marine Technology	<ul style="list-style-type: none"> Identification and distribution survey of coral species in the port Illustrated Book of the Dominant Coral Species in the Port Survey before and after the operation below water for the bio cube demonstration site Ecological survey of fish and shellfish 	Quarterly
National Taiwan Ocean University	<ul style="list-style-type: none"> Survey on the status of offshore seabed ecological habitats and changes in the area Research on the ecological impact of bio cube placement 	Quarterly
National Dong Hwa University	<ul style="list-style-type: none"> Participation in the island-wide 2022 Science Train Program Conclusion of the service-learning agreement to jointly cultivate talents in environmental education 	Every half a year

INITIATIVE PARTNER	COMMUNICATION FREQUENCY
Business for Nature TCC Involvement in the COP15 business statement as the platform member Sign-up for Make It Mandatory and Call to Action	Yearly
WBCSD & Taiwan Nature Positive Initiative Promotion of nature topic governance with businesses by TCC as the founding member Systematic examination of the current status and development opportunities of TCC via six dimensions with reference to WBCSD Nature Readiness Assessment	Monthly
GCCA Introduction of GCCA Sustainability Guidelines for Quarry Rehabilitation and Biodiversity Management to examine the development on biodiversity and nature topics	Yearly